

AIR CONDITIONER

PERFORMANCE

COOLING CAPACITY: 24,000 BTUH @ 60 HZ (NOMINAL)
20,000 BTUH @ 50 HZ (NOMINAL)

RETURN AIR CONDITIONS: 85°F DB/ 50% RH
FREQUENCY: 50/60 HZ

CONDITIONED AIR SUPPLY: 780 CFM APPROX. @ 1.5" ESP
FRESH AIR: 50 CFM (MAX.)

HEATING CAPACITY: 6.6 KW (22,526 BTUH)

DEHUMIDIFYING CAPACITY: 50% MAX

MAXIMUM OPERATING AMBIENT: 131°F

MINIMUM OPERATING AMBIENT (COOLING): 0°F

MINIMUM OPERATING AMBIENT (HEATING): -40°F

MECHANICAL

REFRIGERATION STAGES: ONE

COMPRESSOR: HERMETIC (SCROLL)

EVAPORATOR COIL: COPPER TUBES, ALUMINUM FINS

CONDENSER COIL: COPPER TUBES, ALUMINUM FINS

EXPANSION VALVE: THERMOSTATIC

REFRIGERANT: R-22

CIRCULATING FAN: CENTRIFUGAL

CONDENSER FAN: PROPELLER

AIR FILTER: REPLACEABLE

FRAME AND PANELS: ALUMINUM

FASTENERS: STAINLESS STEEL/ ESNA NUTS

METAL FINISHES: SEE NOTE 3

WEIGHT: 360 LBS

ELECTRICAL

POWER: 120/240 VAC, 1 PHASE, 50/60 HZ

MAXIMUM POWER DRAW: APPROX. 7.3 WATTS (COOLING)
APPROX. 7.3 WATTS (HEATING)

CIRCULATING FAN MOTOR: 1Ø, PSC

CONDENSER FAN MOTOR: 1Ø, PSC

MOTOR PROTECTION: THERMAL OVERLOAD

HEATING STAGES: ONE

HEATING CONTROLS: THERMOSTATIC

COOLING CONTROLS: THERMOSTATIC

MODE SELECTOR SWITCH: HEAT COOL OFF VENT

COOLING SAFETY SWITCHES: HIGH AND LOW PRESSURE

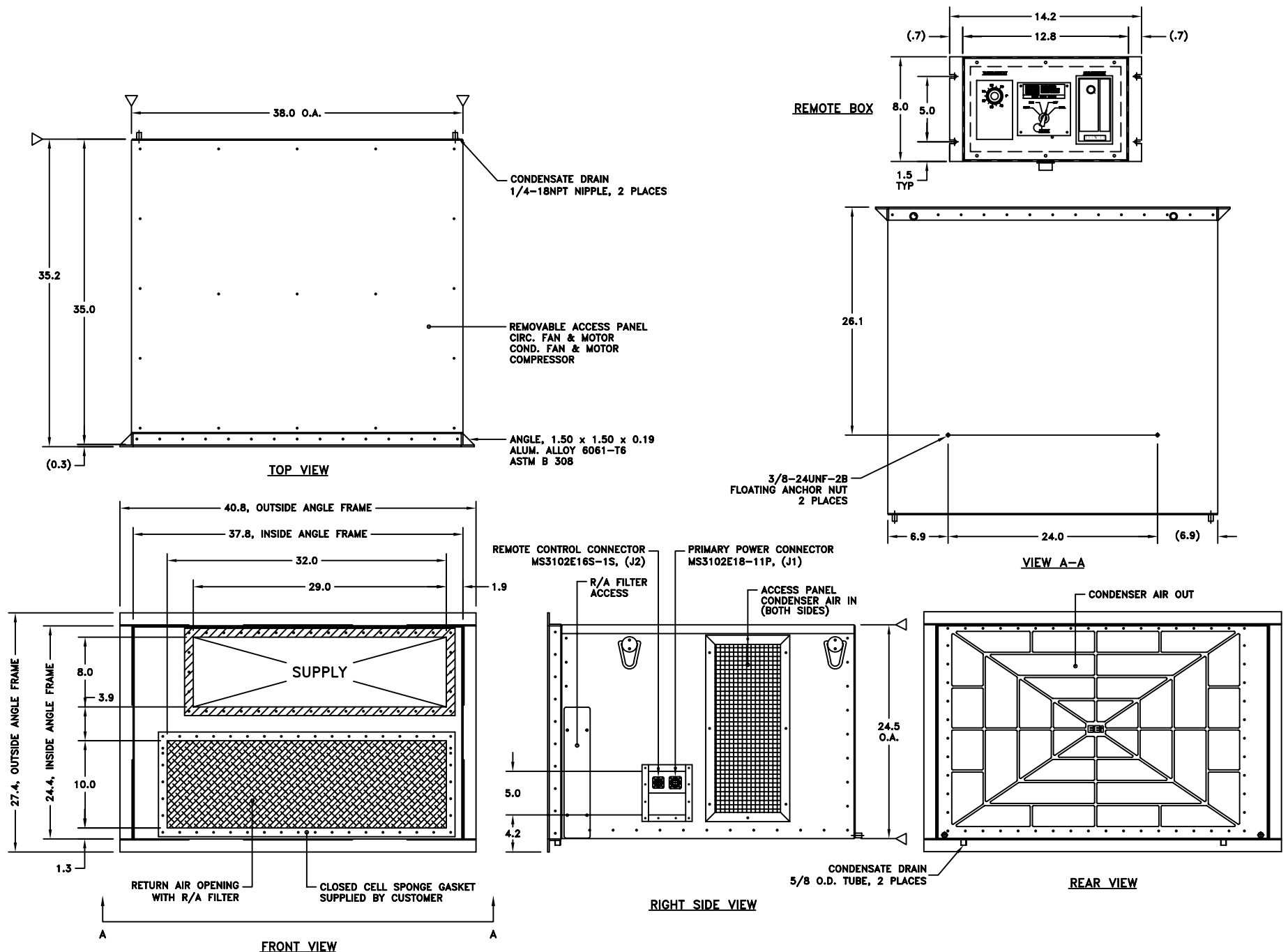
HEATING SAFETY SWITCHES: HIGH TEMPERATURE CUT OUT

FEATURES (X)

HOT GAS BYPASS SYS. (X)	REMOTE CONTROLS (X)	FILTER WARNING LIGHT ()	MAIN POWER DISCONNECT ()
DEHUMIDIFYING (X)	RFI SUPPRESSION ()	ELAPSED TIME INDICATOR ()	MOTORIZED FRESH AIR DAMPER ()
HUMIDIFYING ()	SERVICE SWITCHES ()	EXPLOSION PROOFING ()	TOOL KIT ()

OTHER SPECIFICATIONS

1. RATED TO 10,000 FT. ALTITUDE WITH 3.5°F REDUCTION PER 1,000 FT. ALTITUDE PER MIL-E-4158D, PARA 3.2.32.1
2. QUALITY MIL I-45208A
3. WASH PRIME, PRIMER, OUTSIDE TOP COAT COLOR 383 GREEN CARC IAW MIL-C-53039A
4. ALL HONEYCOMB WAVE GUIDES AND EMI/RFI FILTERS BY OTHERS, IF REQUIRED
5. WATER TIGHT CONDITIONED COMPARTMENT.
6. INCLUDES 18" LONG CONTROL CABLE (FROM ECU TO SHELTER).



THIS DOCUMENT IS CONFIDENTIAL AND IS PROPERTY OF ENGINEERED ENVIRONMENTS, INC. IT CONTAINS INFORMATION WHICH IS PROPRIETARY. IT SHALL NOT BE USED, DISCLOSED, DUPLICATED, REPRODUCED, OR TRANSFERRED WITHOUT PRIOR WRITTEN PERMISSION OF ENGINEERED ENVIRONMENTS, INC.

NOTE: DIMENSIONS APPROX.

C.A.G.E. CODE OLHE3	DRAWN BY DL	DATE 11/2/05	UNIT MODEL NO.	DRAWING NO.
	CHECKED BY HW	DATE 11/4/05	ECU 24() SERIES	P2690