

NOTES : 1. 1 PLC DIMENSIONS ARE ±0.25"

SHEET REVISION STATUS		
	2	1
	B	B

DWG. NO.		SH.		REV.	
1144		1		B	
REVISIONS					
ZONE	LTR	DESCRIPTION	DATE	APPROVED	
A		REV. TOLERANCES AND ADD REAR PAN DIM.	4-17-03	FHF	
4A	B	DELETE 0.31" DIM., ADD SECT. D-D, SEE SHT. 2	5-29-03	FHF	

D
C
B
A

D

C

B

A

A

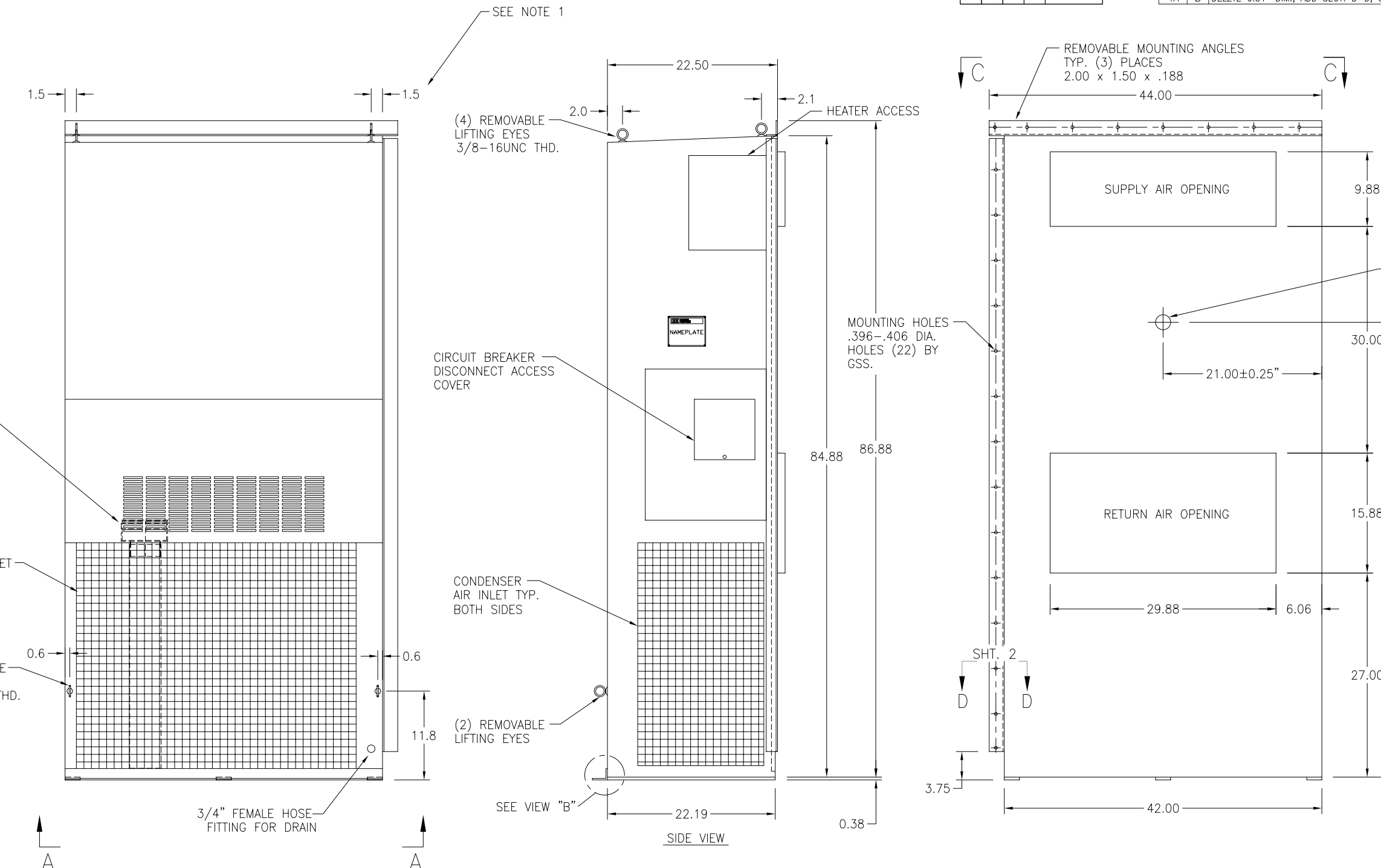
D

C

B

A

A



RIGHT HAND ECU SHOWN
LEFT HAND IS SYM. OPPOSITE

THIS DOCUMENT IS CONFIDENTIAL AND IS THE PROPERTY OF ENGINEERED ENVIRONMENTS, INC. IT CONTAINS INFORMATION WHICH IS PROPRIETARY. IT SHALL NOT BE USED, DISCLOSED, DUPLICATED, REPRODUCED, OR TRANSFERRED WITHOUT PRIOR WRITTEN PERMISSION OF ENGINEERED ENVIRONMENTS, INC.

QTY. REQD.	SYM	NOMENCLATURE OR DESCRIPTION	CODE IDENT	PART OR IDENTIFYING NO.	SPECIFICATION	MATERIAL OR NOTE	ITEM NO.
		SYMBOLS: V=VENDOR ITEM, SEE SPEC/SOURCE CONT DWG					
LIST OF MATERIALS OR PARTS							
		UNLESS OTHERWISE SPECIFIED DIMENSIONS ARE IN INCHES	CONTRACT NO. NORTHROP		ENGINEERED ENVIRONMENTS INCORPORATED CINCINNATI, OHIO		
		TOLERANCE ON FRACTIONS ± - DECIMALS .XX ± 0.13" DECIMALS .XXX ± 0.063" ANGLES ± 2	DRAWN BY FHF DATE 1/15/03		INTERFACE CONTROL DRAWING ECU441144		
		MATERIAL: STEEL	CHECKED		SIZE C.A.G.E. CODE DWG. NO. REV		
		FINISH: DESERT TAN #33531	APPROVED		D OLHE3 1144 B		
NEXT ASSY USED ON APPLICATION		FILE STORAGE: J:\PROJ.\1100\	APPROVED		SCALE: NTS SHEET 1 OF 2		

8

7

6

5

4

3

1

8

7

6

5

4

3

2

1